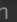
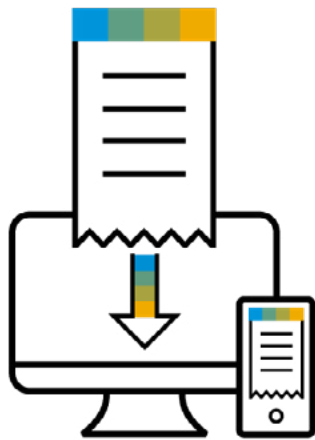


# Harness the Power of American Express® and SAP Concur

Take your spend management to the next level

In partnership with  **AMERICAN EXPRESS**



Imagine making fewer manual payments and spending less time filing paper receipts. Well, you don't have to – two industry leaders have teamed up to make it a reality.

## Introducing the American Express® Business Card Integration with Concur Expense

This offering lets you sync your American Express® Business Card with the Concur Expense solution so you can bring together your company's expense data in one seamless, automated spend management solution.

## How Does the American Express® Business Card Integration Help Your Business?



### Save Money

Reduce expense report transaction and processing costs while improving visibility into employee spend



### Save Time

Streamline processes and automatically capture data so you can devote extra time to more important tasks – while reducing errors



### Improve Compliance

Review transactions to identify potential compliance issues and mitigate the risk of fraud

Integrating your American Express® Business Card with Concur Expense is **fast and easy**.  
For more information, contact your SAP Concur representative.

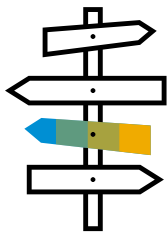
# Work Smarter. Spend Smarter. **Reap the Rewards.**



## See **Measurable** Results

With spend management solutions from SAP Concur, you can:

- Save an average of \$30,00 annually\*
- Lower the cost of each completed expense report by \$20\*
- Accelerate the time from expense report submission to reimbursement by 80%\*



## Make **Better** Decisions

When you integrate your American Express® Business Card with Concur Expense, you can improve visibility and gain important insights to help you make better financial decisions and identify new ways to save money.



## Enjoy **All the Same** Card Member Advantages

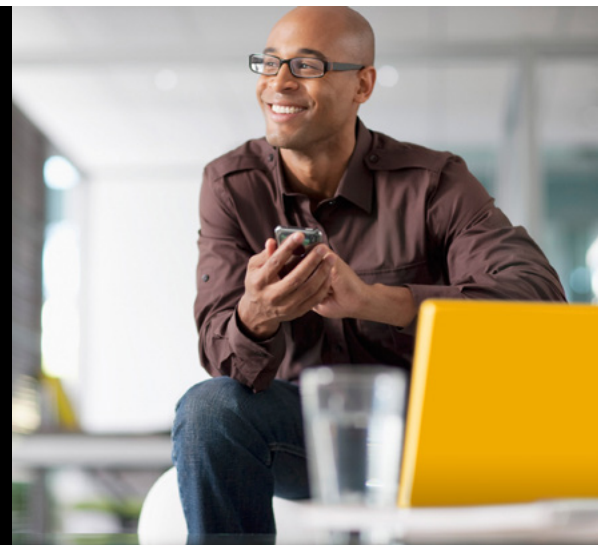
The benefits of American Express® Business Card Integration with Concur Expense go beyond your bottom line. You'll also receive the same great benefits already associated with your Card.



**The American Express® Business Card Integration with Concur Expense** gives you an all-in-one, end-to-end solution that makes it easier to manage your business spend – from request to reconciliation.

Integrating your American Express® Business Card with Concur Expense is **fast and easy**.

For more information, contact your **SAP Concur** representative.



\*Elevate Business Performance and Better Manage Spend with Automation, AMI-Partners, 2018.  
<https://www.concur.com/en-us/resource-center/reports/ami-partners-study-elevate-business-performance>