

SAP Concur 

SAP® Concur® solution series webinar

# New Year, New UI

What you need to know about the new  
user interface update on **October 1, 2022**

THE BEST RUN



# What to Expect?

Change is going to happen – personally and professionally, so moving to the new UI is designed to help with that. Leverage these three best practices to prepare your organization for what's next in your **SAP Concur solution.**

# Work with Your SAP Concur Team to make the Best Choice for Your Organization

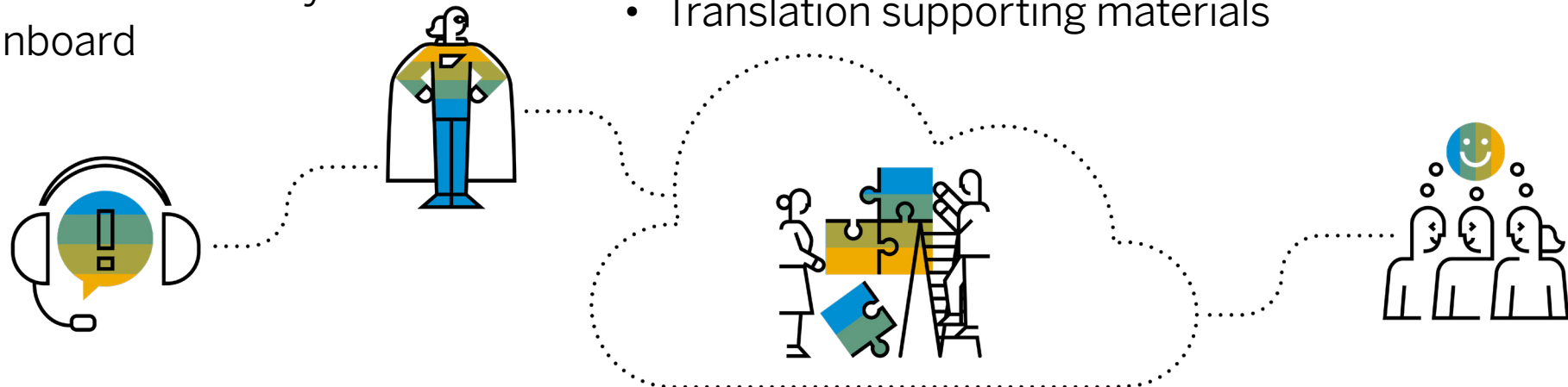
1

## What can you do?

- Launch a small test group first
- Create an administrators test group
- Big Bang: Just turn it on for everyone
- Enable Concur User Assistance by WalkMe to help onboard

## What do you need to start?

- Documentation unique to organization
- Training: Live or recorded?
- Screenshots (differ by country?)
- Translation supporting materials



# Review UI Feature Updates: View, Alerts, Receipts, Itemizations, Attendees

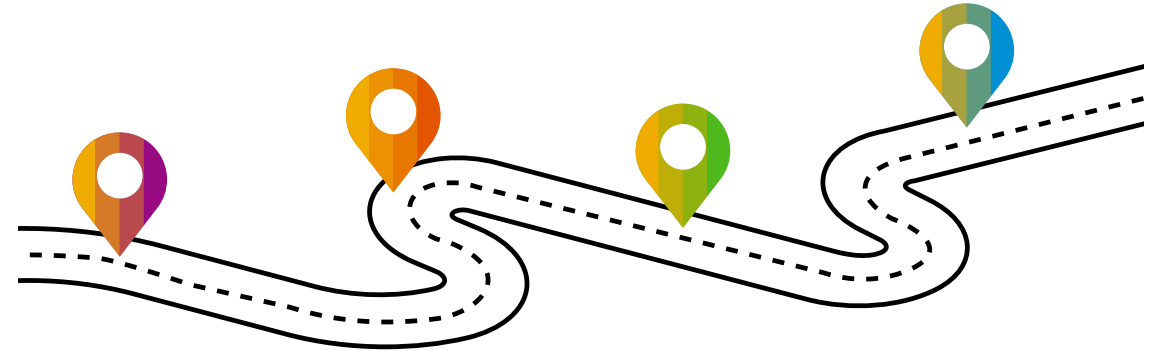
2

**View:** Expanded date ranges.

**Alerts:** More clear flags with the availability to click and view where the errors in a report are occurring.

**Receipts:** Larger, side-by-side view with the expense and itemization alerts.

**Attendees:** More accessible and viewable from header, as well as simpler to search within a list.



## Preview What's New

- **User Experience Settings:** Preview the view for the groups you want within your organization.
- Language change is easily adjusted

# How Enabling Concur User Assistant by Walkme Can Help

3

**What is it?** A digital adoption platform

**Where is it available?** NextGen Expense, NextGen Request, Travel, Invoice, Profile, Homepage, App Center

**What's the cost?** A standard option is complimentary. This option is pre-configured covering general use-cases.

**Can I customize it?** Yes, you can build a version that's tailored to your organization. Options such as custom content, analytics and more are available!

**How complicated is it?** You can easily toggle it on and off for select groups or your entire organization.

**Where can it help?**

- Change management
- Productivity and efficiency
- Spend governance
- Automation of process
- Onboarding new employees
- Surveys for feedback from employees

# Forrester's Total Economic Impact Study of WalkMe

By driving digital adoption, organizations can realize the full potential of their technology investments and grow revenue with their customer-facing applications. WalkMe specializes in driving digital adoption by providing moment-based guidance, insights, and automation for application users as well as the data and analytics for management to develop and execute a rigorous and successful digital adoption strategy that maximizes value over time.

100%

Increased onboarding efficiency.

50%

Reduced IT support calls.

35%

Increased employee retention.

368%

Return on investment (ROI).

Follow Us



**concur.com**

### NextGen UI Executive Summary enUS (22/5)

© 2022 SAP SE or an SAP affiliate company. All rights reserved.

No part of this publication may be reproduced or transmitted in any form or for any purpose without the express permission of SAP SE or an SAP affiliate company.

The information contained herein may be changed without prior notice. Some software products marketed by SAP SE and its distributors contain proprietary software components of other software vendors. National product specifications may vary.

These materials are provided by SAP SE or an SAP affiliate company for informational purposes only, without representation or warranty of any kind, and SAP or its affiliated companies shall not be liable for errors or omissions with respect to the materials. The only warranties for SAP or SAP affiliate company products and services are those that are set forth in the express warranty statements accompanying such products and services, if any. Nothing herein should be construed as constituting an additional warranty.

In particular, SAP SE or its affiliated companies have no obligation to pursue any course of business outlined in this document or any related presentation, or to develop or release any functionality mentioned therein. This document, or any related presentation, and SAP SE's or its affiliated companies' strategy and possible future developments, products, and/or platforms, directions, and functionality are all subject to change and may be changed by SAP SE or its affiliated companies at any time for any reason without notice. The information in this document is not a commitment, promise, or legal obligation to deliver any material, code, or functionality. All forward-looking statements are subject to various risks and uncertainties that could cause actual results to differ materially from expectations. Readers are cautioned not to place undue reliance on these forward-looking statements, and they should not be relied upon in making purchasing decisions.

SAP and other SAP products and services mentioned herein as well as their respective logos are trademarks or registered trademarks of SAP SE (or an SAP affiliate company) in Germany and other countries. All other product and service names mentioned are the trademarks of their respective companies.

See [www.sap.com/copyright](http://www.sap.com/copyright) for additional trademark information and notices.